



TECHNICAL INFORMATION

Input Power:	DC:12V/24V
Operation Temperature:	-25°C to +50°C
Rated Load:	Max 96W/192W
Output Current:	

CONTROLLERS

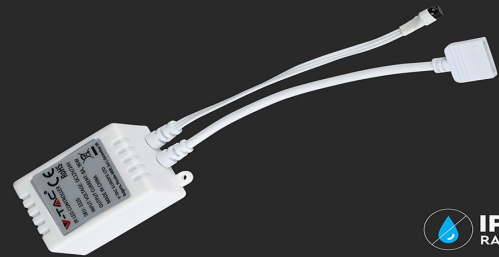
V-TAC's LED Lighting range includes lighting that fulfills the needs of various end-users and industries, offering efficient and innovative products that provide modern solutions at an affordable price. We are proud to also provide an extended multi-year warranty on our products, as well as detailed support.

One brand, endless solutions..

SKU: 3326 - 2938

[View more details](#)

5050 60 RGB+W LED CONTROLLER



IP20
RATING

EASY TO INSTALL
& Low maintenance

DC : 12V/24V

*compatible with V-TAC led striplight



FEATURES

- IR remote controller designed for V-TAC RGB+W/WW LED 5050 60 Striplight
- Easy to use remote control (Control features such as dimming, fade, flash, slow, ON/Off etc.)
- Static power consumption
- Easy to install and requires little maintenance
- Compatible with V-TAC Striplights (RGB+W/WW 5050 60)



PACKAGING

Gross Weight (Kgs): 0.087
Unit CBM: 0.0004

MASTER BOX PACKAGING

Box Qty: 200
Qty Per Pallet: 2000
Length (Box) mm: 50
Width (Box) mm: 130
Height (Box) mm: 60

LISTING DETAILS

Ean Code: 3800230629630