

TECHNICAL INFORMATION

| | |
|-----------------|-------------------|
| Watts: | 360 |
| Input Power: | AC:200-240V, 50Hz |
| Body Type: | Metal |
| Dimmable: | No |
| Dimension: | 208x82x32mm |
| Output Voltage: | DC:24V |
| Output Current: | 15A |

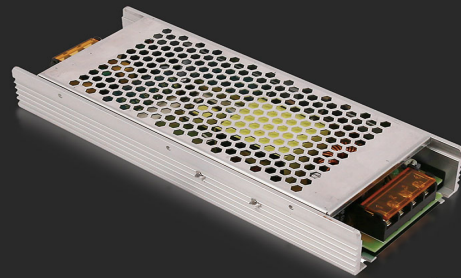
METAL POWER SUPPLY | LED LIGHTING

V-TAC's LED Lighting range includes lighting that fulfills the needs of various end-users and industries, offering efficient and innovative products that provide modern solutions at an affordable price. We are proud to also provide extended multi-year warranty on our products, as well as detailed support.

One brand, endless solutions..

SKU: 3275 - 1583

[View more details](#)



DC:24V



FEATURES

- Metal drivers that are compatible with all V-TAC Strip lights, LEDs etc.
- Short circuit protection, overload protection and stable output voltage
- Built-in EMI Filter
- High efficiency and low temperature
- 100% load tested
- CE, ROHS and EMC approved

PACKAGING

Gross Weight: 0.585
Unit CBM: 0.00092
Dimension: 208x82x32mm

MASTER BOX PACKAGING

Box Qty: 20

LISTING DETAILS

Commodity Code: 8504409090
EanCode: 3800157654456