



### TECHNICAL INFORMATION

Watts:	18
Lumens:	2160
Input Power:	AC:200-240V, 50/60Hz
Long Life:	20,000 Hours
Unit Color:	Transparent
Body Type:	ABS+PC
PF:	>0.9
LED Chip Type:	SMD-Samsung Chip
CRI:	>80
Operation Temperature:	-20°C to +40°C
Beam Angle:	120°
Color:	6400K
Dimension:	600x78x72mm
lumens per watt:	120
Linkable:	Upto 20 Units
Type:	Transparent Cover

### PRO CLEAR COVER SERIES

V-TAC's LED Lighting range includes lighting that fulfills the needs of various end-users and industries, offering efficient and innovative products that provide modern solutions at an affordable price. We are proud to also provide extended multi-year warranty on our products, as well as detailed support.

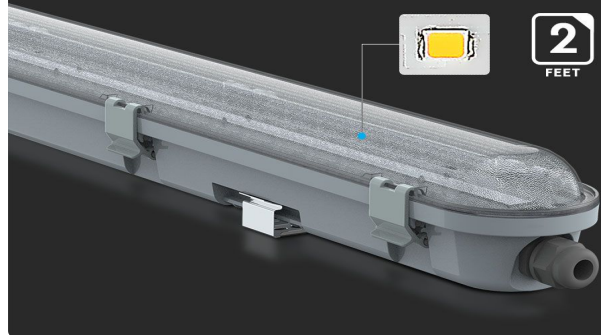
*One brand, endless solutions..*

SKU: 20208 - 1407 1648

[View more details](#)

### SMD LED'S

Provided by Samsung



**IP65**  
RATING



**3 YEAR**  
WARRANTY



**IK 06**



**CRI > 80**



**120**  
Lumen/W

### FEATURES

- Waterproof Fitting designed with Lumen efficiency 120LM/W
- Using high power SMD-Samsung Chip technology which makes it more reliable and durable
- Strong and sturdy ABS+PC body
- Complete protection from water, dust and corrosion - IP65 Rated
- Designed for maximum efficiency & minimal glare
- Suitable for parking lots, warehouses, garages, storage docks, workshops etc.



### PACKAGING

Gross Weight (Kgs): 0.74  
Unit CBM: 0.005425  
Dimension: 600x78x72mm

### MASTER BOX PACKAGING

Box Qty: 12

### LISTING DETAILS

EanCode: 3800157657792